

Chapter wise Test

Chapter: 3 Human Reproduction

SET 1

Time: 75 min

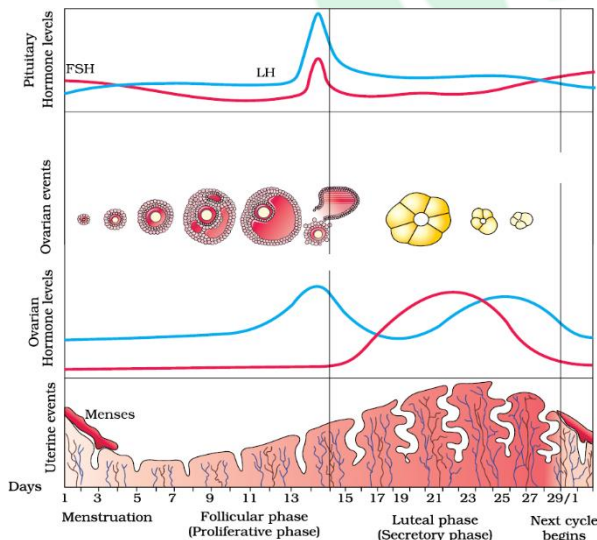
Subject: Biology

Max Marks: 35

General Instructions: This paper consists of 15 questions. Q 1-5 carries 1 mark each, Q 6-9 carries 2 mark each, Q 10-13 carries 3 marks each, Q 14-15 carries 5 marks each.

- 1 How is Corpus luteum formed? 1
- 2 When are Primary Oocytes formed in the human female body? 1
- 3 Name the finger like projections found in the edges of infundibulum. 1
- 4 Mention the function of Leydig cells. 1
- 5 Why is testes lodged in the scrotum? 1
- 6 Name the Female Primary sex organ. List the different parts of male reproductive system. ½
+1½
- 7 Draw a flow chart to show the duct system in human mammary gland. 4x½
- 8 Describe any 4 parts of a human sperm. 4x½
- 9 All copulations need not lead to pregnancy. Why? 1+1

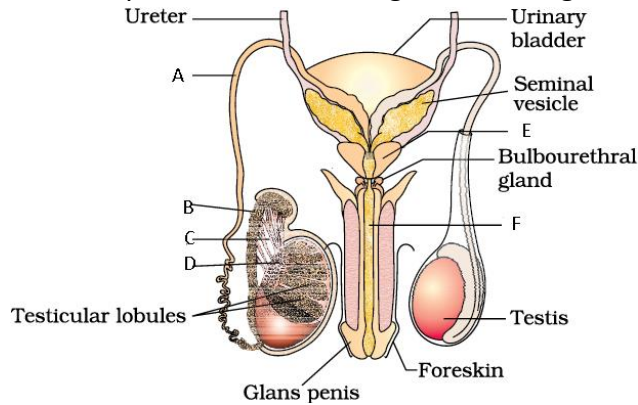
10



Given is a diagrammatic representation of different events during menstrual cycle. Study the diagram and explain the Ovarian events. 6x½

- 11 Placenta acts as endocrine tissue along with its normal function. Name any three hormones secreted from placenta. Mention their functions. 3x1
- 12 Describe the formation of three germ layers starting from zygote. 3x1

- 13** You are provided with a diagram showing the sectional view of Seminiferous tubule. Label the parts A-F 6x½



- 14** How does normal delivery of a matured foetus take place? What else can be done to induce delivery of the baby? What is the importance of colostrum? 3+1
- 15**
- Embryo with 8-16 blastomeres is called _____ 1
 - Mitotic division in zygote to produce blastomeres is called _____ 1
 - Differentiate between menopause and menarche 1
 - How the levels of Estrogen and Progesterone vary in pre and post ovulatory phases. (indicate high /low/ equal) 2

Do not forget to use the **Self Monitoring Tool** to record your performance.