

Chapter wise Test

Chapter: 3 Human Reproduction

SET 2

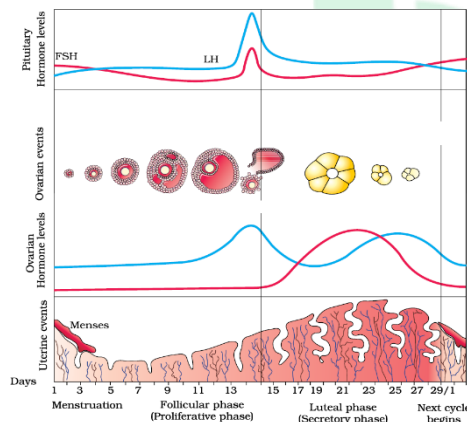
Time: 75 min

Subject: Biology

Max Marks: 35

General Instructions: This paper consists of 15 questions. Q 1-5 carries 1 mark each, Q 6-9 carries 2 mark each, Q 10-13 carries 3 marks each, Q 14-15 carries 5 marks each.

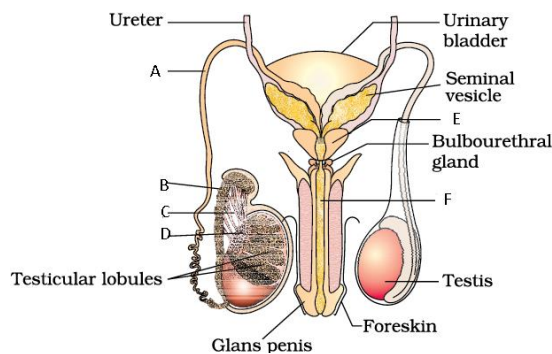
- 1 How are hormone levels related to ovulation? 1
- 2 Write the ploidal levels of the following a) spermatid b) Primary oocyte 2x½
- 3 What is Spermiation? 1
- 4 Name any two accessory glands associated with male reproductive system. 2x½
- 5 Which two types of cells are produced from the inner lining of seminiferous tubules? 2x½
- 6 Name the male Primary sex organ. List the different parts of female reproductive system. 6x½
- 7 Draw a flow chart showing the duct system in human testis. 6x½
- 8 Describe in brief the structure of ovum. 3x1
- 9 Sex of the baby is determined by the father and not mother. Give genetic reasons. 3
- 10 Given below is a diagrammatic representation of different events during a menstrual cycle. 6x½



Explain the uterine events.

- 11 Name the three hormones produced by women during pregnancy. Mention their roles. 6x½
- 12 Explain the process of fertilization. Why a second sperm cannot enter into a fertilised sperm? 2+1

13



The image shows a sectional view of male reproductive system. Label A-F. 6x½

- 14** What is implantation? Describe the formation of placenta. What is the importance of placenta? 1+3+1
- 15**
- a) What is the function of acrosome? 1
 - b) When do the second meiotic division occur in oogenesis? What is the product? 1
 - c) Write two important roles played by Oxytocin. 1
 - d) Explain the post ovulatory events in menstrual cycle. 2

Do not forget to use the **Self Monitoring Tool** to record your performance.

